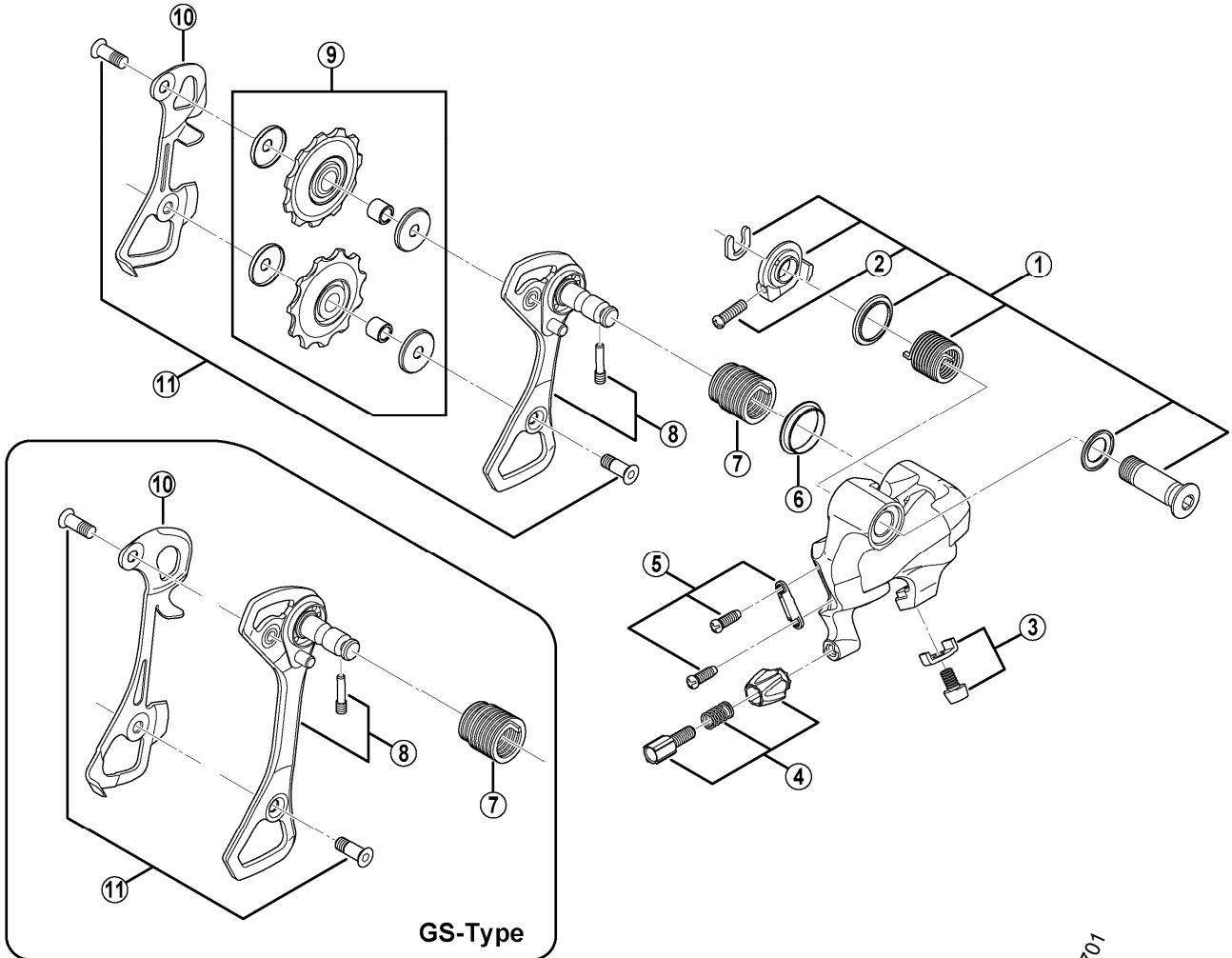


TIAGRA Rear Derailleur (10-speed)

RD-4601 (SS) Short Cage

RD-4601 (GS) Long Cage



RD-5701

ITEM NO.	SHIMANO CODE NO.	DESCRIPTION	INTERCHANGEABILITY	
1	Y5Y398010	B-Axle Assembly (SS-type)	A	
	Y5Y398020	B-Axle Assembly (GS-type)	A	
2	Y556250B0	B-Tension Adjusting Screw (M4 x 13.5)	A	
3	Y5XH980B0	Cable Fixing Bolt (M5 x 8.5) & Plate	A	
4	Y5Y398030	Cable Adjusting Bolt Unit	A	
5	Y5X998020	Stroke Adjusting Screws (M4 x 11.5) & Plate	A	
6	Y5UC14000	P-Seal Ring	A	
7	Y5XV14000	P-Tension Spring (SS-type)	A	
	Y5XV17000	P-Tension Spring (GS-type)	A	
8	Y5Y398040	Outer Plate Assembly (SS-type)		
	Y5Y398050	Outer Plate Assembly (GS-type)		
9	Y5Y398080	Tension & Guide Pulley Set	A	
10	Y5XN08000	Inner Plate (SS-type)		
	Y5Y309000	Inner Plate (GS-type)		
11	Y5V598140	Pulley Bolt 12.5mm (2 pcs.)	A	

A: Same parts.

B: Parts are usable, but differ in materials, appearance, finish, size, etc.

Absence of mark indicates non-interchangeability.

Nov.-2012-3424A

© Shimano Inc. A

Specifications are subject to change without notice.

SHIMANO