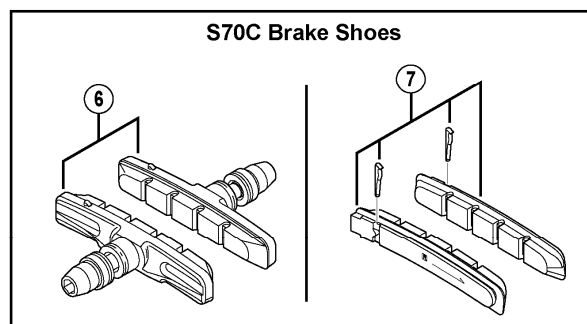
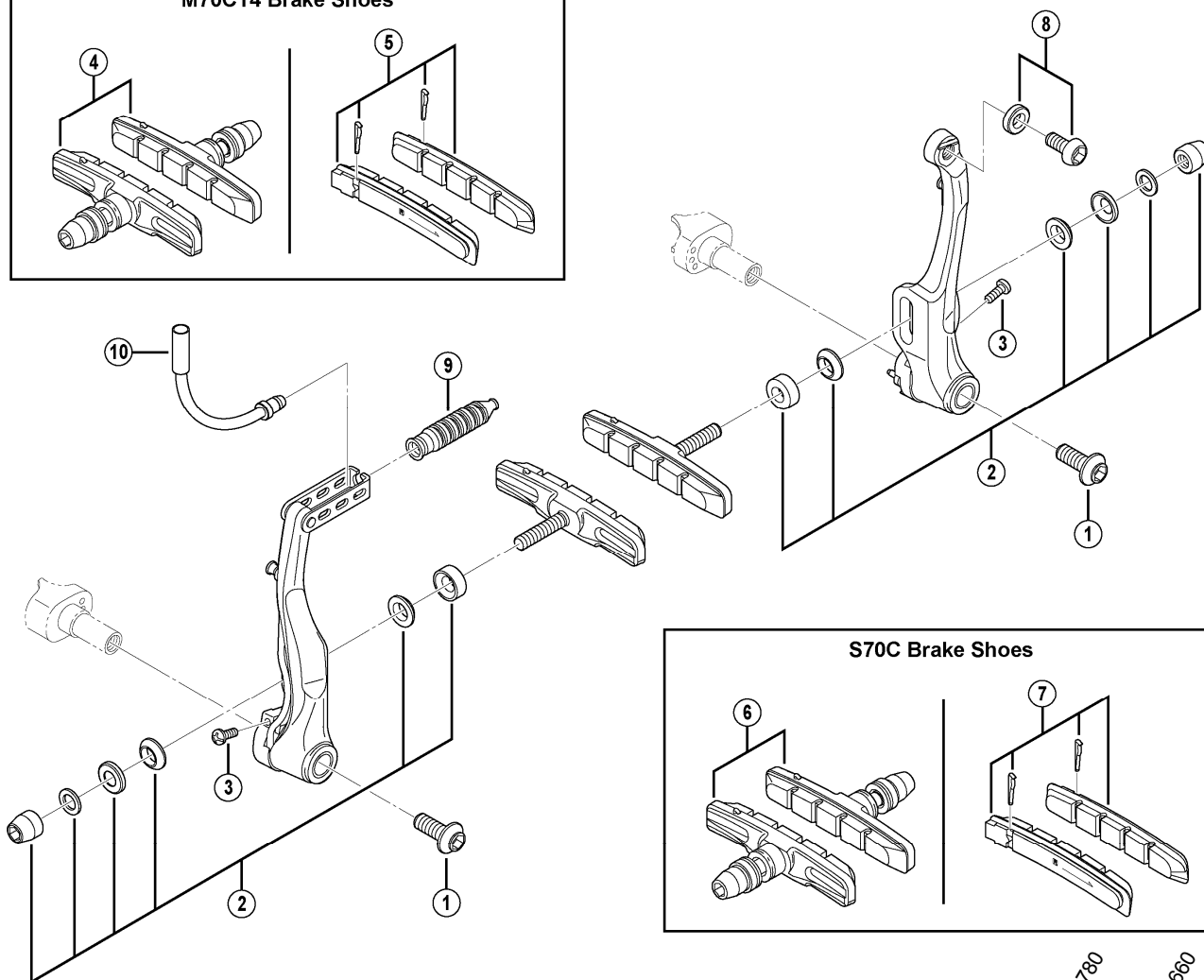
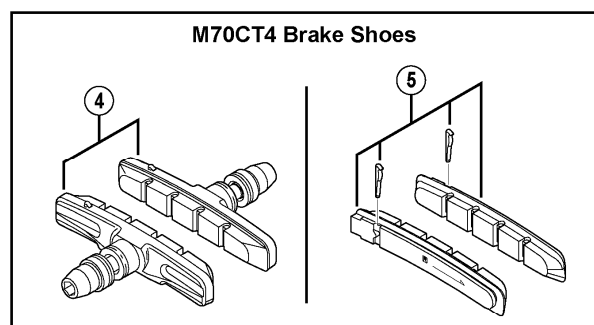


# DEORE LX V-Brake

## BR-T670-S Silver Version

## BR-T670-L Black Version



BR-T780

BR-T660

ITEM NO.	SHIMANO CODE NO.	DESCRIPTION	INTERCHANGEABILITY		
1	Y8EM07000	Link Fixing Bolt (M6 x 16)	A	A	
	Y8EM07010	Link Fixing Bolt (M6 x 25)	A	A	
2	Y8EM98040	Shoe Fixing Nut Unit	A	A	
3	Y8GV05000	Spring Tension Adjustment Screw (M3 x 8)	A	A	
4	Y8W798010	M70CT4 Cartridge-Type Brake Shoe Set (Pair) for BR-T670-S	B		
	Y8W798020	M70CT4 Cartridge-Type Brake Shoe Set (Pair) for BR-T670-L	B		
5	Y8A298060	M70CT4 Cartridge-Type Brake Shoes & Fixing Pins (Pair)	A		
6	Y8W798030	S70C Cartridge-Type Brake Shoe Set (Pair) for BR-T670-S	B		
	Y8W798040	S70C Cartridge-Type Brake Shoe Set (Pair) for BR-T670-L	B		
7	Y8AA98130	S70C Cartridge-Type Brake Shoes & Fixing Pins (Pair)	A		
8	Y8B098020	Cable Fixing Bolt (M6 x 11.5) & Fixing Plate		A	
9	Y8FM05000	Boot	A	A	
10	Y8AA98070	Inner Cable Lead Unit (90 : Middle)	A	A	
	Y8AA98080	Inner Cable Lead Unit (135 : Long)	A	A	
	Y8AA98120	Inner Cable Lead Unit (45 : Short)	A	A	

A: Same parts.

B: Parts are usable, but differ in materials, appearance, finish, size, etc.

Absence of mark indicates non-interchangeability.

Jul.-2012-3307

© Shimano Inc. A

Specifications are subject to change without notice.

# SHIMANO